

Tips on Successful Information Searches

Text:

- In general, text searches respond more quickly than map searches.
- Try identifying your research topics with two factors (such as last name and source). Using more factors can require more computer analysis time.

Maps:

- For best results, use a fast modem. The system will work with a slower modem, but be prepared to wait a few moments between each selection.
- For best results, use this system during off-peak Internet use times (first thing in the morning and late afternoons).

Please let us know if you have questions or suggestions at sally.sherman@idwr.idaho.gov

Here's How to Contact IDWR Regional Offices If You Need Assistance

If your water right begins with 01, 11-35, 73, 74, 75:

IDWR Eastern Regional Office
900 N Skyline Dr Ste A
Idaho Falls, ID 83402-1718
(208) 525-7161

If your water right begins with 02, 36, 37, 41, 43, 45, 47, 71, 72:

IDWR Southern Regional Office
1341 Fillmore St., Ste 200
Twin Falls, ID 83301-3380
(208) 736-3033

If your water right begins with 03, 51, 55, 57, 61, 63, 65, 67, 69, 77, 78, 79:

IDWR Western Regional Office
2735 Airport Way
Boise, ID 83705-5082
(208) 334-2190

If your water right begins with 81, 82, 83, 84, 85, 86, 87, 91-98:

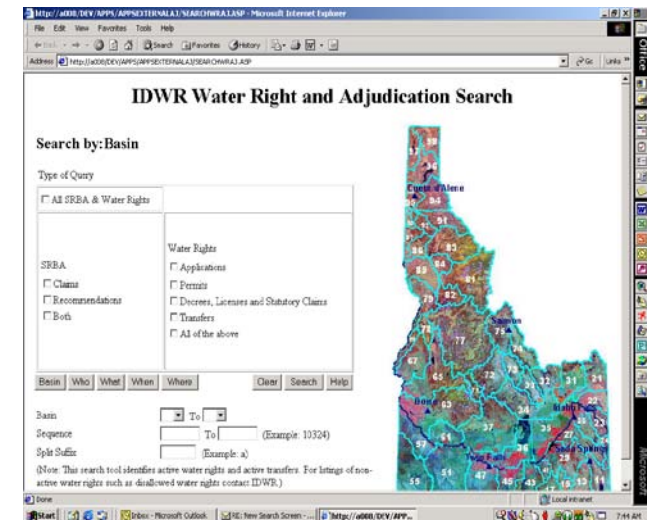
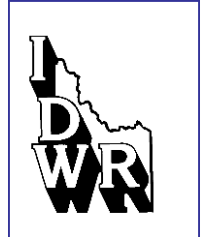
IDWR Northern Regional Office
7600 N Mineral Dr Suite 100
Coeur d'Alene, ID 83815
(208) 762-2819

If you have any questions, contact:

IDWR State Office
322 East Front St., PO Box 83720
Boise, ID 83720-0098
1-800-451-4129

IDAHO DEPARTMENT OF WATER RESOURCES

Water Right Research Using the Internet



Find Information About Idaho Water Rights Using Either Text or Maps.

With the IDWR Water Rights Search Pages, you can find your water rights using either text or maps:

- Go to the IDWR Home Page

<http://www.idwr.idaho.gov>



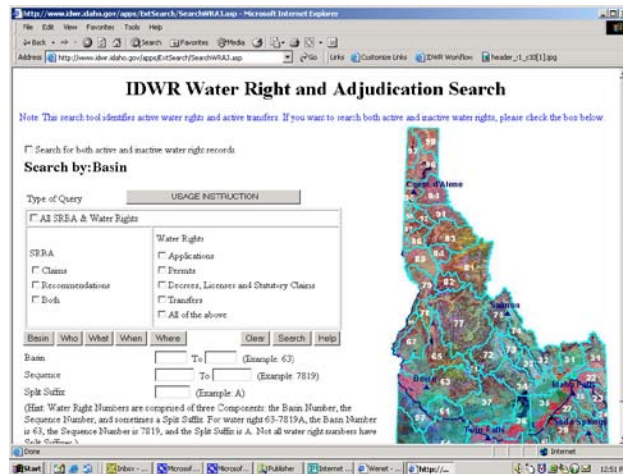
Under the “On-line Data” click:

- Water Right and Adjudication Search (text-based) or
- Interactive Mapping (map-based); General Mapping Tool or

Click on Water Management; SRBA; and Research a Claim; text or map.

Research Using Text

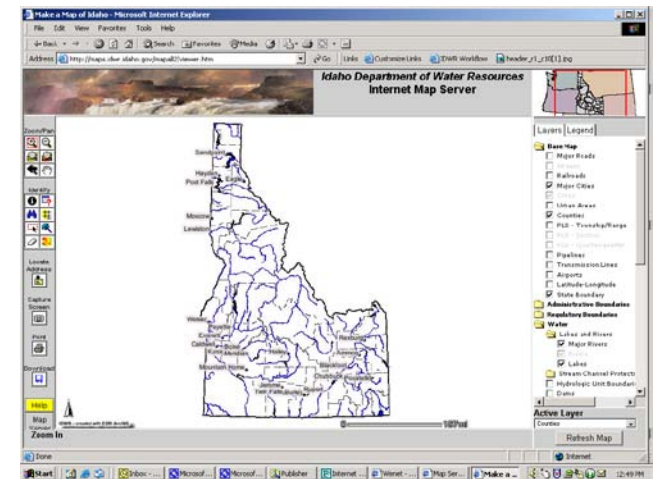
- Using text, start with this page:





- Enter known information, click **Search** and see the results.
- Allow some time for the search to take place. The database includes more than 200,000 different water rights.
- For more instructions, click **Help**

Research Using Maps

- Using maps, start with this page:



- Review the tools on the upper left of the screen if you are not familiar with them, by hovering the cursor over the tool or by clicking on help.
- First, use the zoom tool  to enlarge your search area.
- This tool can be used multiple times to zoom into your area.
- Use the pan tool  to adjust the screen location.
- For more instructions, click **Help**